



**EASTERN ENERGY**

深圳市东兹电池有限公司

Shenzhen Eastern Energy Co., LTD





EASTERN ENERGY

# 公司介绍

## COMPANY PROFILE

深圳市东兹电池有限公司（简称**EEE**），作为全球领先的专业电池解决方案提供商，凭借深厚的技术积淀与持续的创新研发能力，为各行业客户提供高端定制化能源存储系统。公司专注于锂离子电池、磷酸铁锂电池、镍氢电池、锂离子聚合物电池等多元化产品的研发与制造。

我们的资深工程团队采用前沿的电池化学技术和智能制造工艺，确保每一款产品都具备卓越的能量密度、循环寿命和安全性能。公司产品广泛应用于：医疗设备、智能机器人系统、仪器仪表、照明解决方案、安防监测设备、光伏储能系统、应急电源解决方案、便携式通信终端、工业级电动工具、不间断电源（**UPS**）、地质探测设备、智能家电及消费电子等领域。

作为电池技术领域的标杆企业，**EEE**始终致力于为客户提供最具前瞻性的电池组系统集成方案。凭借在新型能源技术领域的专业积累，我们已成为众多行业最值得信赖的战略合作伙伴，持续为客户创造差异化的竞争优势和增值价值。

(EEE), as a global leading professional battery solution provider, provides high-end customised energy storage systems for customers in various industries by virtue of its profound technological accumulation and continuous innovation and R&D capability.

EEE focuses on the development and manufacture of diversified products such as lithium-ion batteries, lithium iron phosphate batteries, nickel-metal hydride batteries and lithium-ion polymer batteries. Our senior engineering team uses cutting-edge battery chemistry and intelligent manufacturing processes to ensure that each product has excellent energy density, cycle life and safety performance. Our products are widely used in medical equipment, intelligent robot systems, instruments, lighting solutions, security monitoring equipment, photovoltaic energy storage systems, emergency power solutions, portable communication terminals, industrial-grade power tools, uninterruptible power supplies (UPS), geological exploration equipment, intelligent home appliances and consumer electronics.

EEE has always been committed to providing customers with the most forward-looking battery pack system integration solutions and has become the most trusted strategic partner in many industries, and continues to create differentiated competitive advantages and value-added value for customers.

# 01

关于我们  
ABOUT US



公司介绍  
生产环境  
Company introduction  
Production environment

# 02

锂电池PACK组  
LITHIUM BATTERY PACK



太阳能产品电池组  
Solar product battery pack  
机动车电池组  
Motor vehicle battery pack  
摩托车电池组  
Motorcycle battery pack  
光伏储能电池组  
Photovoltaic energy storage battery pack  
数码产品电池组  
Digital product battery pack  
机器人电池组  
Robot battery pack

# 03

便携移动电源  
PORTABLE POWER BANK



便捷式储能系列  
Portable energy storage series  
移动式储能系列  
Mobile energy storage series  
壁挂式储能系列  
Wall-mounted energy storage series  
机架式储能系列  
Rack-mounted energy storage series  
堆叠塔式储能系列  
Stacked tower energy storage series

# 04

发电系统  
POWER GENERATION



PGS系列  
PGSAS系列  
PGSL 系列  
PGSAP系列

# 05

应用领域  
APPLICATION AREA



更多应用领域  
More application areas



生产设备和环境 Production equipment and environment



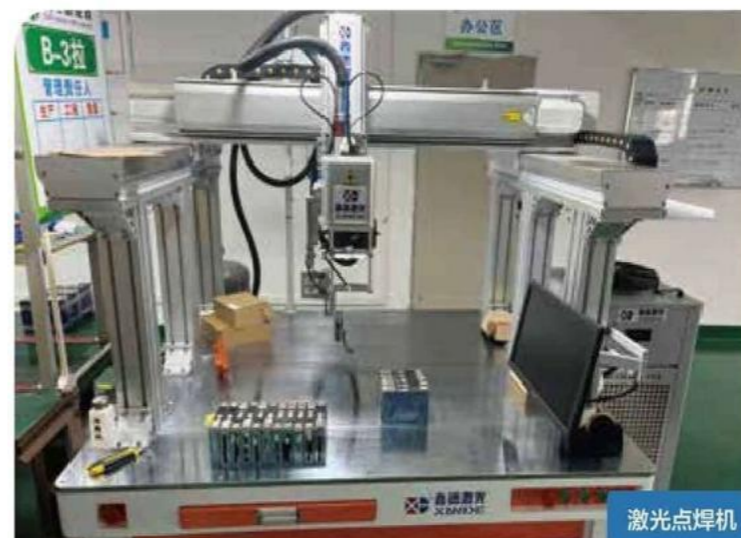
东兹质量保证：专业的技术工人、高端的设备，良好的环境。  
EEE Quality Assurance: Professional Technical Workers, High-end Equipment, Good Environment Ensure Product Quality.



# 检测生产设备 Equipment



EASTERN ENERGY



激光点焊机



电池分融机



电池老化柜



电池综合测试仪



分选机

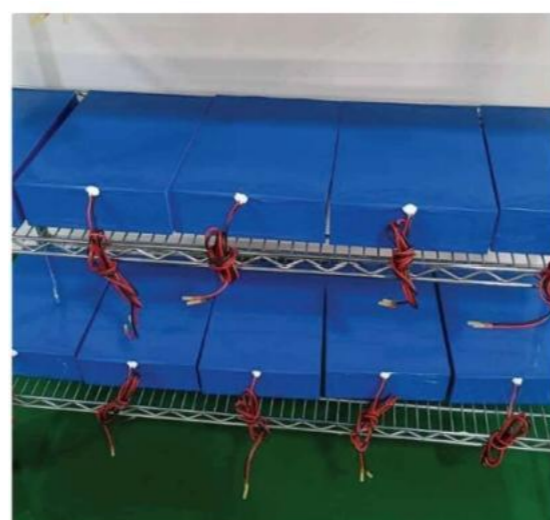


面垫机

# 产品实拍 Product Photograph



EASTERN ENERGY



# 太阳能灯电池组

## Solar Lamp Battery Pack



EASTERN ENERGY



电力系统  
Power System

( 太阳能路灯 )

Solar Street Lights



### 技术参数

#### Technical Parameters

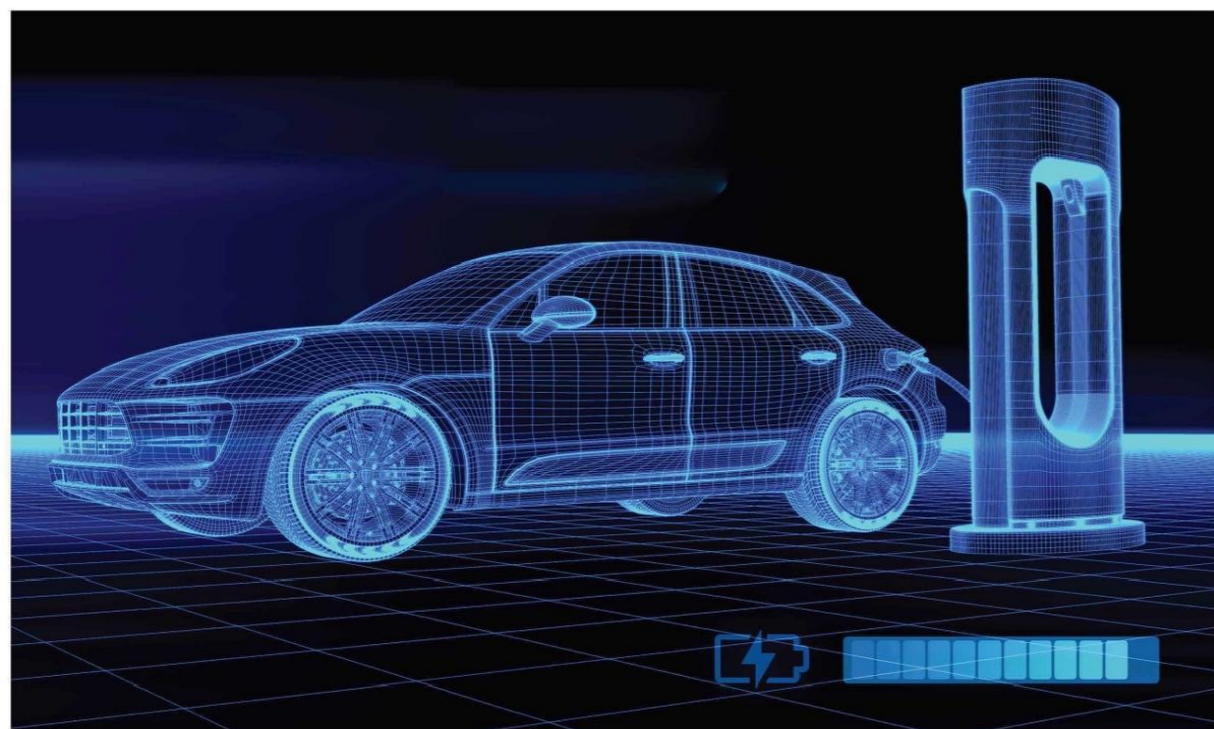
标准电压 Standard Voltage	11.1V /12.8V
额定容量 Rated Capacity	30ah/50ah/60ah/80ah
电池材料 Battery Material	Li-iron/ LFP Battery
连续充电电流 Continuous Charge Current	<10A
连续放电电流 Continuous Discharge Current	<10A
充电截止电压 Charge Cut-off Voltage	12.6V 14.6V
循环寿命 Cycle Life	>800次
工作温度 Operating Temperature	-20°C-60°C
放电截止电压 Discharge Cut-off Voltage	8.25V10.0V

# 机动车电池组

## Motor Vehicle Battery Pack



EASTERN ENERGY



电池管理系统  
BMS



智能输出  
Intelligent Output



过滤和电压稳定  
Filtering and Voltage  
Stabilisation



过充/过放保护  
Overcharge/Overdischarge  
Protection



易于安装  
Easy Installation

### 技术参数 Technical Parameters



标准电压 Standard Voltage:48V	放电截止电压 Discharge Cut-off Voltage: 40V
循环充电电流 Cycle Charge Current: ≤300A	通信协议 Communication Protocol: RS485
电池材料 Battery Material: LFP Battery	循环寿命 Cycle Life : >2000次
循环最大充电电流 Cyclic Maximum Charge Current: ≤100A	工作温度 Operating Temperature:-20°C-60°C
连续放电电流 Continuous Discharge Current: ≤200A	保护功能 Protection function: 过充过放 Overcharge and Over Discharge
瞬时最大电流 Instantaneous Maximum Current: ≤300A	
充电截止电压 Discharge Cut-off Voltage: 58.4V	

## 三元锂电池 Lithium-ion Battery



圆形三元锂电池  
Circular Lithium Ternary Battery



聚合物三元锂离子电池  
Polymer Battery



方形三元锂电池  
Square Lithium Ternary Battery

## 磷酸铁锂电池 LFP BATTERY



圆形磷酸铁锂电池  
Circular Lithium Iron Phosphate Battery



方形磷酸铁锂电池  
Square Lithium Iron Phosphate Battery



额定电压 Rated Voltage: 1S-32S, 3.7V-96V

电池材料 Battery Material: 三元锂/铁锂电池 LFP/Lithium-Iron Batteries

(支持各种尺寸的定制电池组和容量, 包括CB, KC 认证)

(Supports **customized battery packs** of various sizes and capacities, including **CB, KC certifications**)

# 便捷式储能系列 Convenient energy storage



EASTERN ENERGY



Usage scenario

## 使用场景

户外出行：露营灯,徒步/登山设备,地质勘探等设备供电。

Outdoor Travel: Power supply for camping lamps, hiking/mountaineering equipment, geological exploration and other equipment.

商业活动: 广告照明, 收款设备。

Commercial activities: advertising lighting, collection equipment.

应急情况: 突发停电, 抢险救灾设备

Emergency: sudden power outage, emergency rescue equipment

## 产品特点 Product Features

**便捷式储能电源:** 户外+家庭式储能电源, 适用于各种缺电问题。

Outdoor travel and portable energy storage for home use. Meet the electricity needs of household and outdoor devices.

**显示与控制性能:** 显示屏可实时显示剩余电量、输出功率、输入状态等信息, 电源的控制、模式切换、简单直观。

**Product Details:** There are ventilation fan openings on the side to prevent overheating from affecting performance and lifespan. There is an induction mark on the front of the body.

**过充过放保护:** 内置电路保护机制

**Dual protection function:** Equipped with an advanced Battery Management System (BMS), it can accurately monitor the battery level status. When overcharged or overloaded, it will automatically cut off.

## Technical Parameter

Battery capacity	Single cell 280Ah/896Wh (nominal voltage 3.2V/280Ah)
Battery Features	Single cell 280Ah, users can freely replace 280Ah cells
LED lighting	12V 3w Max
AC power (AC socket)	220V50Hz/300W(ax600W)
TYPE-C bidirectional	5V/3A,9V/3A/, 12V/3A,15V/3A, 20V/2.25A45W Max
USBA*2	5V/3V,9V/2.5A,12V/2A 24W Max
Adapter charging	11V/28V, 5A, 85wMax (charging head specification DC7909/Anderson)
Solar charging	11V/28V, 5A, 85WMax (charging head specification DC7909/Anderson)
Product weight	9kg(approx.)
Product size	275*190*130mm(approx.)

# 便捷式储能系列

Convenient energy storage



EASTERN ENERGY

## 产品特点 Product features

### 户外出行和家庭便携储能 Outdoor travel and home portable energy storage

满足家庭和户外的手机、相机、无人机、小家电等设备用电需求，适用于户外各种缺电问题。

Meet the power needs of mobile phones, cameras, drones, small home appliances and other devices at home and outdoors, applicable to a variety of outdoor power shortage problems.

### 双重保护功能 Dual Protection Function

内置先进的电池管理系统(BMS)，能精准监测电池电量状态。当充电过充过载，将自动切断。

Built-in advanced battery management system (BMS), can accurately monitor the battery power status. It will automatically cut off when overcharging and overloading.

### 隐藏式接线设计 Concealed wiring design

隐藏式接线，更好预防触电等。

Concealed wiring, better prevention of electric shock and so on.



## 技术参数 Technical Parameters

电池容量 Battery Capacity	单电芯 Cell 280Ah/896wh(标称电压 Nomal Voltage 3.2V/280Ah)
电池特色 Battery Features	单电芯 Cell 280Ah,用户可以随意更换280Ah电芯 Users can replace the batteries.
LED照明 LED Illumination	12V3w Max
交流电(AC插座) Alternating current (AC outlet)	220V50Hz/300W(ax600W)
TYPE-C双向 TYPE-C Bidirectional	5V/3A,9V/3A/,12V/3A,15V/3A,20V/2.25A45W Max
USBA*2	5V/3V,9V/2.5A,12V/2A 24W Max
适配器充电 Adapter Charging	11V/28V,5A,85wMax (Charger specification DC7909/Anderson)
太阳能充电 Solar Charging	11V/28V,5A,85WMax (Charger specification DC7909/Anderson)
产品重量 Product Weight	9kg(approx.)
产品尺寸 Product Size	275*190*130mm(approx.)



EASTERN ENERGY

# 便捷式储能系列 Convenient Energy Storage Series

## 产品特点 Product features

### 便捷式储能电源 Convenient energystorage power supply

便捷储能电源用途广泛，满足户外出行、应急救援、商业活动等用电需求。

Convenient energy storage power has a wide range of applications, meeting the electricity needs of outdoor travel and household use.

### 双重保护功能 Dual protection function

内置先进的电池管理系统(BMS)，能精准监测电池电量状态。当充电过充过载，将自动切断。

Equipped with an advanced Battery Management System (BMS), it can accurately monitor the battery level status. When overcharged or overloaded, it will automatically cut off.

### 显示与控制性能 Display and Control Performance

显示屏可实时显示剩余电量、输出功率、输入状态等信息，电源的控制、模式切换、简单直观。

The display screen can display real-time information such as remaining power, output power, input status, etc. The control and mode switching of the power supply are simple and intuitive.

## 技术参数 Technical Parameters

电池 Battery	21.2V,48A/1037Wh,Lithium-ion NCA
寿命 Lifetime	≥1000
AC输入 AC Input	AC100-130V,50-60Hz,450W Max
PV输入 PV Input	DC12-30V,5A Max,120W Max
AC输出 AC Output	AC 120V/60Hz,1000W,Pure Sine Wave
USB-A输出 USB-A output	5V3A/9V2A/12V2A,24W Max
TYPE-C输出 TYPE-C output	5V3A/9V3A/12V3A/15V3A/20V5A,100W Max
DC输出 DC output	12V5A,60W Max
LED灯 LED light	≤3W
重量 Weight	9.9Kg
操作温度 Operating Temperature	0~40°C
认证 Certifications	UN38.3/MSDS/FCC/UL



使用场景

# 便捷式储能系列

## Convenient Energy Storage Series



EASTERN ENERGY

### 技术参数 Technical Parameters

电池容量 Battery capacity	1110Wh(6*10*5*3.7)/1008Wh(7*3*15*3.2)
电池类型 Type	7串铁锂 7 strings of lithium iron
交流电(AC插座) AC power (AC socket)	220V50Hz/1000W(peak2000W)/1200W/1500W
USB - A输出*4 USB-Aoutput* 4	5V-3.6A,9V-2.5A,12V-2A(supportQC2.0QC3.0)
Type-C1输出 Type-C1 output	5V-2.4A,9V-3A,12V-2.25A(PD27W)
Type-C2输出/输入 Type-C2 output/input	5V-3A,9V-3A,12V-3A,15V-3A,20V-3A(PD60W)
点烟器 The cigarette lighter	13V10A,130W
DC口充电 DC port charging	电压 (Voltage) 10.6-32V,电流 (current) 4.5-6.8A,200W
太阳能充电 Solar charging	电压 (Voltage) 10.6-32V,电流 (current) 4.5-6.8A,200W
内置适配器 Built in adapter	输入电压100V~260V交流, 功率400W input voltage 100V-260VAC, power400W
适配手机APP Adapt to mobile apps	蓝牙 Bluetooth
产品重量 Product weight	12.6kg(approx.)
产品尺寸 Product size	305*245(footpad)*220mm(approx.)



### 产品特点 Product features

#### 充电接口丰富 Rich charging interfaces

设有多个USB 接口, 满足多种数码设备同时充电。还有DC接口,能适配更多对直流电有需求的设备,确保通讯设施的正常运行。

Equipped with multiple USB and DC interfaces, it supports the charging needs of different devices and meets the simultaneous charging requirements of multiple digital devices.

#### 电量显示直观 Intuitive battery display

配备显示屏, 可实时清晰显示电量(如图中显示80%电量)

Equipped with a display that clearly shows the power level in real time (e.g. 80% power level shown in the picture)

#### 灵活充电方式 Flexible charging method

可通过电网或太阳能等可再生能源进行充电, 实现多种充电方式, 方便在各种环境下使用。

It can be charged through renewable energy sources such as the power grid or solar energy, achieving multiple charging methods and facilitating use in various environments.

# 移动式储能系列

## Mobile energy storage series



EASTERN ENERGY



## 技术参数 Technical Parameters

电池容量 Battery capacity	2500Wh lithium iron
MPPT电压范围 MPPT voltage range	30-120V
最大直流电压 Maximum DC voltage	145开路电压 (145open circuit voltage)
MPPT启动电压 MPPT starting voltage	≥36V
最大直流电流 Maximum DC current	25±0.5A
电池额定电压 Rated voltage of battery	25.6v
电池最大充电功率 Maximum charging power of battery	3000W
额定交流输入电压 Rated AC input voltage	230V50HZ
AC输出 AC output	3000W纯正旋波 (3000W Pure spiral wave)
产品重量 Product weight	38.0kg(approx.)
产品尺寸 Product size	672*140*461mm(approx)

## 产品特点 Product features

散热设计合理 侧面设有散热孔，有助于设备在长时间高负荷运行时有效散热，保障设备稳定性和使用寿命。

Reasonable heat dissipation design: Side cooling holes help the equipment to dissipate heat effectively when running under high load for a long time, ensuring the stability and service life of the equipment.

丰富接口配置，直观显示与智能控制 Rich interface configuration, intuitive display and intelligent control.

### 使用场景

医院储能、银行备电、家庭储能、数据中心、基站供电、军工设备、企业储能备电、风光互补系统等不间断储能电源

Usage Scenarios: Hospital energy storage, bank power supply, home energy storage, data centre, base station power supply, military equipment, enterprise energy storage power supply, wind and solar complementary system and other uninterruptible energy storage power supply.

# 移动式储能系列

## Mobile energy storage series



EASTERN ENERGY



### 技术参数 Technical Parameter

电池容量 Capacity	2240Wh/2800Wh/3360Wh
电池类型 Type	7串铁锂 7 strings of strings of lithium iron phoshate
交流电(AC插座) AC power (AC socket)	220V50Hz/2500W(峰值5000W)/3000W/3500W
USB-A输出*4 USB-A output* 4	5V-3.6A,9V-2.5A,12V-2A(supportQC2.0QC3.0)
Type-C1输出 Type-C1 output	5V-2.4A,9V-3A,12V-2.25A(PD27W)
Type-C2输出/输入 Type-C2 output/input	5V-3A,9V-3A,12V-3A,15V-3A,20V-3A(PD60W)
点烟器 The cigarette lighter	13V10A,130W
DC口充电 DC port charging	电压(Voltage)10.6-32V,电流(current)4.5-6.8A,200W
太阳能充电 Solar charging	电压(Voltage)10.6-32V,电流(current)4.5-6.8A,200W
内置适配器 Built in adapter	输入电压100V~260V交流,功率400W Input voltage 100V~260VAC, power 400W
适配手机APP Adapt to mobile apps	蓝牙 Bluetooth
产品重量 Product weight	28.9kg(approx.)
产品尺寸 Product size	370*220*280mm(approx.)

### 使用场景

医院储能、银行备电、家庭储能、数据中心、基站供电、军工设备、企业储能备电、风光互补系统等不间断储能电源。

### Usage Area

Uninterrupted energy storage power sources such as hospital energy storage, bank backup power, base station power supply, military equipment, and wind solar complementary systems.

# 移动式储能系列

## Mobile energy storage series



EASTERN ENERGY



### 技术参数 Technical Parameter

电池容量 Battery capacity	5120Wh(16*25*3.2*4 Wh)
电池类型 Type	16串磷酸铁锂 16 strings of lithium iron phoshate
LED照明 LED lighting	12V 10W Max
交流输出 AC output	220V50Hz/3000W(peak6000W)
2*TYPE-C	5V/3A,9V/3A/,12V/3A,15V/3A,20V/5A100W Max
2*DC5521	5V,9V,12V,15V/10A150W Max;20V,24V/6.5A156 Max
4*QC3.0	5V/3V,9V/2.5A,12V/2A48W Max
2*无人机充电 2 * drone charging	51.2V/50A
12V车充输出 12V car charger output	13V/10A130W Max
内置适配器充电 Built in adapter for charging	100V~240V,58.4V/13A750W Max
小车充电 Car charging	12V/7.5A 100W Max(Charging head specification DC7909)
太阳能充电 Solar charging	18-150V(available 1600W solar panelAnderson)
可扩展电池包 Expandable battery pack	5120Wh
适配手机APP Adapt to mobile apps	蓝牙 Bluetooth
产品重量 Product weight	60kg(approx.)
产品尺寸 Product size	309*225*241mm(approx.)

#### 使用场景:

医院储能, 银行备电, 家庭储能, 数据中心, 基站供电, 军工设备, 企业储能备电, 风光互补系统

#### Usage Area

Uninterrupted energy storage power sources such as hospital energy storage, bank backup power, base station power supply, military equipment, and wind solar complementary systems.

# 壁挂式储能系列

## Wall mounted energy storage series



### 产品特点 Product features

#### 便捷移动设计

底部装有轮子，顶部有把手，方便携带，适用于工地、展会、户外大型活动等需要灵活供电的场景。

#### 电池8大保护功能

电池更设有8大保护功能，充电防逆，温度保护，短路保护，过流保护，过放保护，过充保护，过压保护，均衡功能。

#### 直观显示与智能控制

电池更设有8大保护功能，充电防逆，温度配备显示屏，可实时显示电量、输出功率、输入状态等关键信息，便于用户监控和管理。

#### 双重保护功能

从BMS 软件保护到空气开关硬件保护，极大保护电池运行顾虑。

#### 隐藏式接线设计

隐藏式接线，更好预防触电等。

#### Convenient mobile design

The bottom is equipped with wheels and the top has handles, making it easy to carry and suitable for power needs such as construction sites, exhibitions, and outdoor activities.

#### 8 major battery protection functions

The battery is equipped with 8 major protection functions, including reverse charging protection, temperature protection, short circuit protection, overcurrent protection, overdischarge protection, overcharge protection, overvoltage protection, and balancing function.

#### Hidden wiring design

Hidden wiring for better prevention of electric shock, etc.

### 技术参数 Technical Parameter

电池类型 Type	LiFe
电池组额定电压 Rated voltage of battery pack	PO451.2V
电池容量 Battery capacity	104Ah
电池能量 Battery energy	5.32kw
循环寿命 cycle life	6000
最大充电电流 Maximum charging current	100A
最大放电电流 Maximum discharge current	100A
工作环境温度 Ambient Temperature	-10° °C~55°C
存储温度 Storage temperature	-15°C~60°C



# 机架式储能系列

## Rack mounted energy storage series



### 技术参数 Technical Parameter

电芯材料 Cell material	磷酸铁锂电池 LFP battery
标称电压(V) Nominal voltage (V)	51.2V
标称容量(V) Nominal Capacity (V)	200Ah
充电截止电压 Charging cutoff voltage	58.4V
放电截止电压 Discharge Cut-off Voltage	44.8V
串并联方式(S串联, P并联) Series parallel mode (S series, p parallel)	16S1P
尺寸 size	L615*W485*H245mm
重量 weight	88KG
持续放电电流 Continuous discharge current	200A@25° °C
持续充电电流 Continuous charging current	Max200A@25°°C

### 产品特点 Product features

#### 大型储能电源

适用于家庭储能、施工设备及户外商业活动如夜市摊位、临时展会的照明、电子设备供电

**Large scale energystorage power supply**

Suitable for household energy storage, construction equipment, and outdoor commercial activities such as night market stalls, lighting for temporary exhibitions, and power supply for electronic devices.

#### 电池8大保护功能

电池更设有8大保护功能，充电防逆，温度保护，短路保护，过流保护，过放保护，过充保护，过压保护，均衡功能。

#### 8 major battery protection functions

The battery is equipped with 8 major protection functions, including reverse charging protection, temperature protection, short circuit protection, overcurrent protection, overdischarge protection, overcharge protection, overvoltage protection, and balancing function.

#### 结构与安全性

坚固外壳可抵御碰撞、灰尘、雨水等，施工场地环境复杂，户外商业活动也常面临风吹日晒雨淋，其坚固性适应这类恶劣条件，保证正常工作。

#### Structure and Safety

The sturdy shell can resist collisions, dust, rain, etc. The construction site environment is complex, and outdoor commercial activities often face wind, sun, and rain, its firmness adapts to such harsh conditions and ensures normal operation.

# 机架式储能系列

## Rack mounted energy storage series



EASTERN ENERGY



▲ 模块化设计，标准化生产，通用性强，安装、操作、维修简单方便。  
Modular design, standardized production, strong universality, simple and convenient installation operation, and maintenance.

▲ 采用磷酸铁锂电芯，低内阻、高倍率、高安全、长寿命。单体电芯内阻、电压、容量等一致性高。  
Using iron phosphate battery cells, with low internal resistance, high rate, high safety, and long lifespan. The consistency of internal resistance, voltage, capacity, etc. of individual battery cells is high.

▲ 支持快充快放。支持CAN、RS485 等协议，可满足多种场合的使用需求。  
Support fast charging and fast discharging. Supporting protocols such as CAN and RS485, it can meet the usage needs of various occasions.

▲ 完善的BMS 保护功能和控制系统，过流、过压、绝缘等多重防护设计。  
Complete BMS protection function and control system, with multiple protection designs such as overcurrent, overvoltage, and insulation.

▲ 可视化LCD 显示屏，可设置运行参数，实时查看数据和运行状态，精确诊断运行故障。  
Visual LCD display screen, capable of setting operating parameters, real-time viewing of data and operating status, and accurate diagnosis of operating faults.

▲ 循环次数可达6000次(80%DOD,0.5C,25°C)，使用寿命可高达10年以上，综合运行成本低。  
The number of cycles can reach 6000 times (80% DOD, 0.5c, 25 °c), and the service life can be over 10 years, with low overall operating costs.

电芯材料 Cell material	磷酸铁锂电池 lithium iron phosphate battery
标称电压 Nominal voltage (V)	51.2V
标称容量 Nominal Capacity (V)	200Ah
充电截止电压 Charging cutoff voltage	58.4V
放电截止电压 Discharge Cut-off Voltage	44.8V
串并联方式(S串联、P并联) Series parallel mode (S series, P parallel)	16S1P
尺寸 size	L615*W485*H245mm
重量 weight	88KG
持续放电电流 Continuous discharge current	200A@25°C
持续充电电流 Continuous charging current	Max200A@25° °CC



# 堆叠塔式储能系列

## Stacked Tower Energy Storage Series



**全新A 品电芯** 全新A 品品牌磷酸铁锂电芯，汽车级动力电池，循环寿命6000次，高安全性、较好的快充性能和更高的能量密度

Brand new A-grade battery cells

Brand new A-grade lithium iron phosphate battery cells, automotive grade power batteries, with a cycle life of 6000 times, high safety, good fast charging performance, and higher performance energy density.

### BMS智能保护板

八大保护功能：过充电保护、过放电保护、过电流保护、短路保护、温度保护、均管理状态监控和通信 以及故障诊断，使产品使用更加安全

BMS intelligent protection board

Eight protection functions: overcharge protection, overdischarge protection, overcurrent protection, shortcircuit protection, temperature protection, uniform management status monitoring, and communication and fault diagnosis.

### 堆叠式储能技术

在电力系统调峰、可再生能源集成、建筑和微电网、电动汽车充电基础设施以及工业应用和备用电源 等领域都有广泛的应用潜力。

Stacked energy storage technology

in power system peak shaving, renewable energy integration, building and microgrid, electric vehicle charging infrastructure, as well as industrial applications and backup power sources There is broad potential for application in various fields.

电芯材料 Cell material	磷酸铁锂电池 lithium iron phosphate battery
标称电压 Nominal voltage	51.2V
标称容量 Nominal Capacity	100Ah
充电温度范围 Charging temperature range	Charge: 0~+50°C
放电温度范围 Discharge temperature range	Discharge: -20~+55°C
循环寿命 Cycle life	6000 (80%DOD, 0.5C, 25°C)
额定输出功率 Rated output power	5000W
额定输出电压 Rated output voltage	230Vac, 单相
持续放电电流 Continuous discharge current	100A@25°C
持续充电电流 Continuous charging current	Max 100A@25°C



EASTERN ENERGY



PGSL 系列太阳能发电系统

PGSL seriessolar energy  
Power generation system

PGSAP系列太阳能发电系统

PGSAP seriessolar energy  
Power generation system



## Product Introduction

1. Pure sine wave output, which can meet the use of various types of loads.

纯正弦波输出，可满足各种类型负载使用

2. The charging efficiency of the mains is high, and the charging current and charging voltage can be set through the LED screen.

可通过LED 屏幕设置充电电流及充电电压，满足不同种类的蓄电池。

3. It has a multi-mode setting function, and the priority of photovoltaic, mains, and battery can be selected through the LED screen.

具有多种模式设置功能，可通过LED 屏幕进行选择设置光伏市电、电池的优先等级

4. With battery over-discharge, after the inverter is turned off, the inverter will automatically start when the photovoltaic or mains power is restored.

具有电池过放、过载保护、过温保护、短路保护等功能



# APPLICATION FIELDS

## 应用领域



乘用车  
Passenger Cars



大巴车 Bus



电钻  
Electric drill



固定发电站  
Stationary power stations



货车  
Lorry



无人机  
Drones



太阳能发电  
Solar Power



大型船舶  
Large Ships



叉车  
Forklift